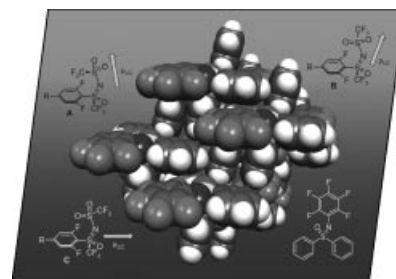


COVER PICTURE

The cover picture illustrates the conformational equilibrium of highly fluorinated sulfoximides. The conformation of this polar group critically influences the dielectric anisotropy of liquid crystals derived therefrom. The crystal structure of heterostilbene-like fluoroaromatic sulfoximides is dominated by stacking interactions of orthogonal aromatic substructures. Details are discussed in the article by P. Kirsch et al. on p. 797 ff.



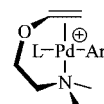
MICROREVIEW

Contents

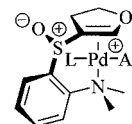
783 M. Oestreich*

Neighbouring-Group Effects in Heck Reactions

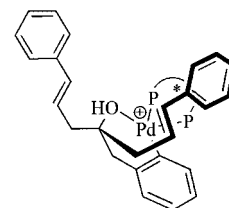
Keywords: Catalysis / C–C coupling / Heck reaction / Enantioselectivity / Regioselectivity



regiocontrol



diastereocontrol



enantiocontrol